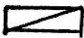

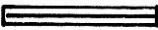

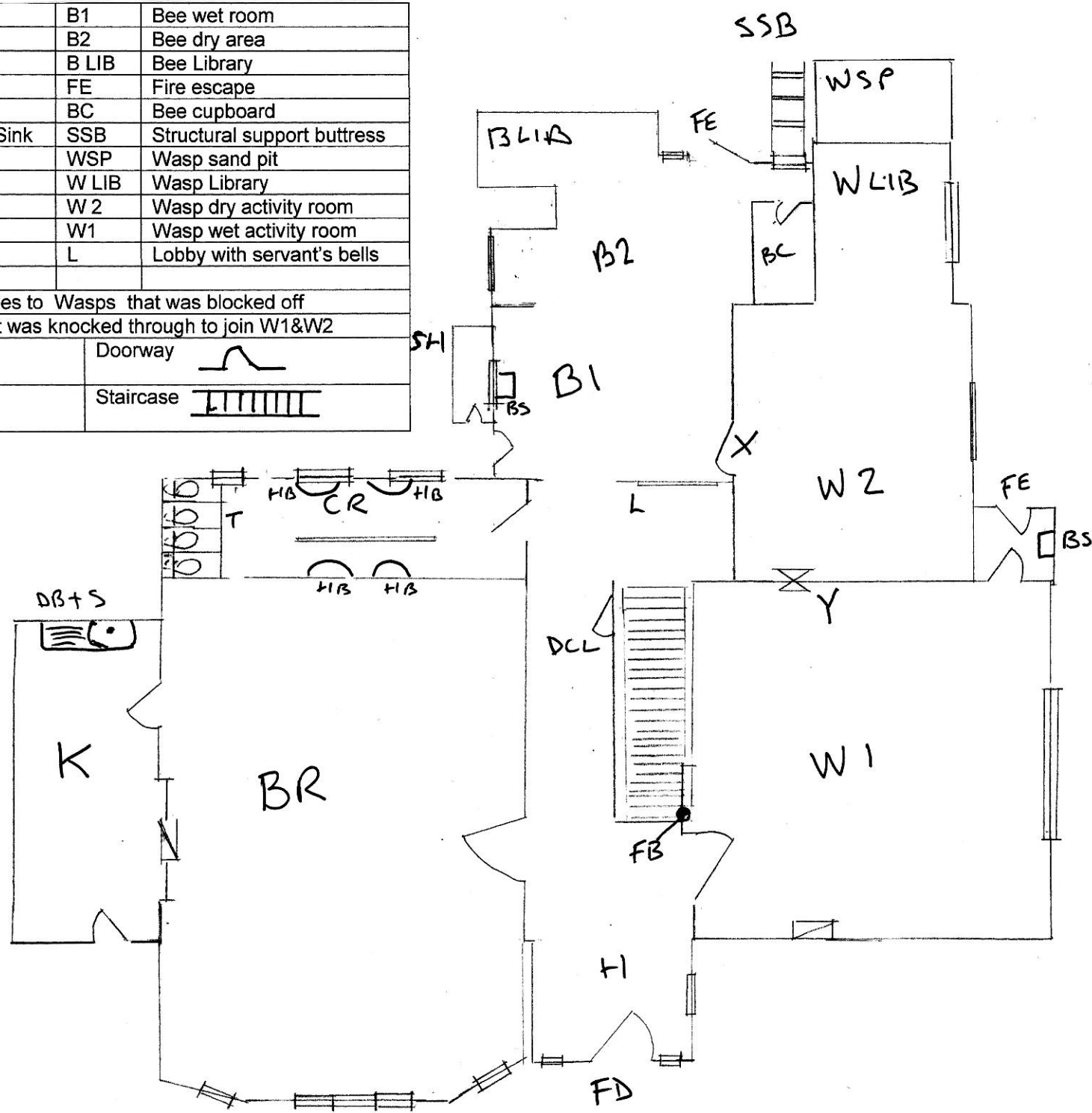
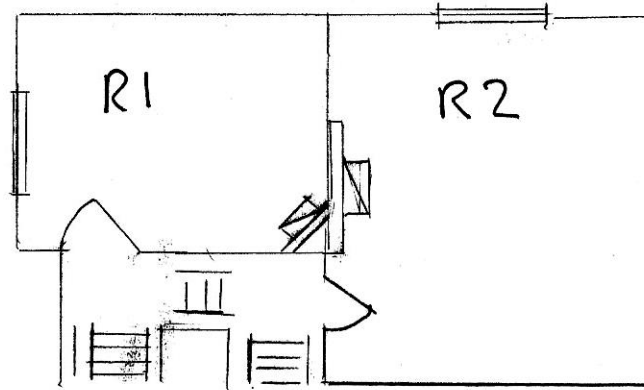


FD	Front door	B1	Bee wet room
H	Hallway	B2	Bee dry area
FB	Fire bell	B LIB	Bee Library
BR	Big Room	FE	Fire escape
K	Kitchen	BC	Bee cupboard
DB+S	Draining board + Sink	SSB	Structural support buttress
CR	Cloak room	WSP	Wasp sand pit
HB	Hand basin	W LIB	Wasp Library
T	Toilets	W 2	Wasp dry activity room
DCL	Date chip larder	W1	Wasp wet activity room
SH	Summer house	L	Lobby with servant's bells
BS	Belfast sink		
X	Doorway form Bees to Wasps that was blocked off		
Y	Serving hatch that was knocked through to join W1&W2		
Fire place		Doorway	
Window		Staircase	



②

R1 (higher than R1) was above B1 and overlooked the Bee paddling pool area	R2 (lower than R1) was above the Wasps and overlooked the back garden
Initially a bedroom. It had a green basin and splash back in one corner. The incumbent moved out into a caravan that was parked where the Tripod was later erected.	Used for various activities including the after school 'Science club'.
A room used to listen to schools broadcasts on the radio	
One of two rooms used by the Hornets	Second (wet) of two rooms used by the Hornets
After the Hornets moved into the Hut	
Music room	School Office

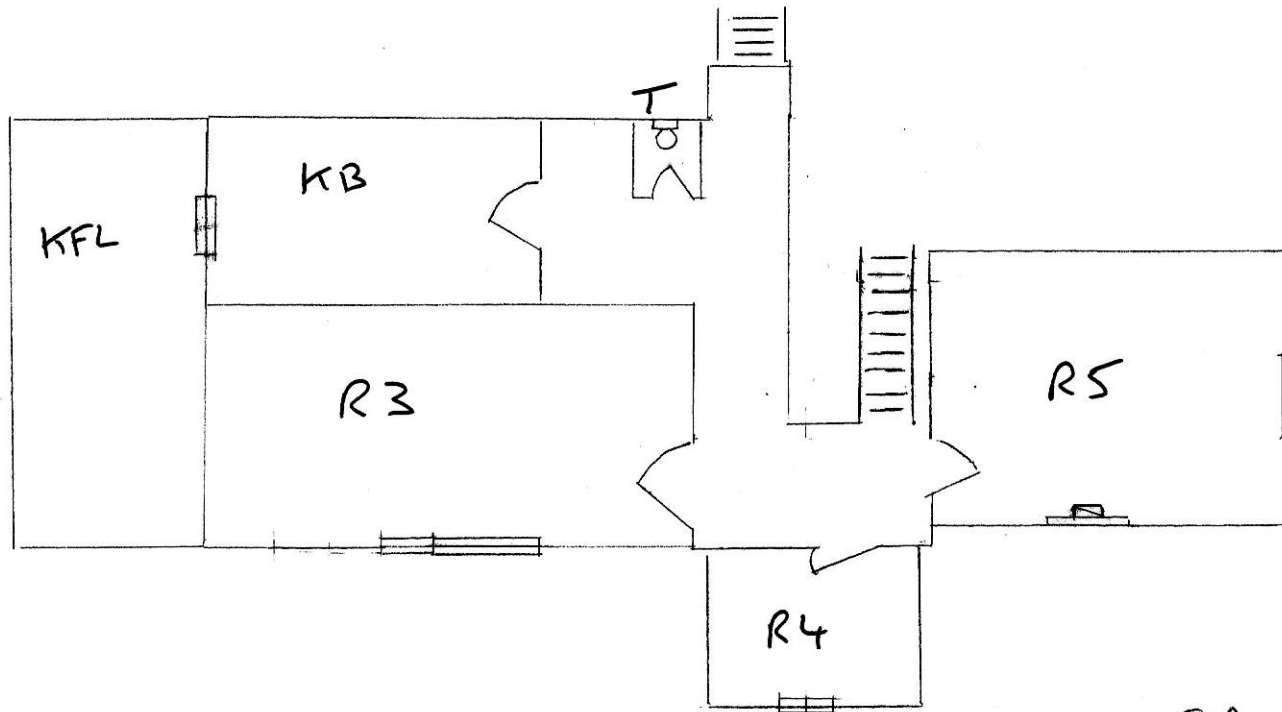


©Amaryllis Elphick 01/03/2014

③

The Powlesland's flat
First floor

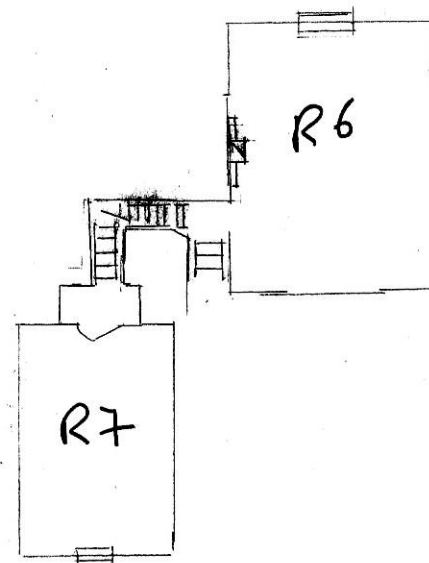
T	Toilet
K/B	Kitchenette / bathroom
KFL	Kitchen Flat Roof: Over ground floor kitchen. Used as 'patio' in the summer.
R3	Large room. Initially school meetings were held in this room
R4	Room over front hall
R5	Large room



©Amaryllis Elphick 01/03/2014

(4)

The Powlesland's flat Second and top floors	
R6	Much of the time this was the Powlesland's sitting room but it was used from time to time for 1:1 and small group lessons. The ceiling sloped down towards the window. The window looked out over the back garden.
R7	The attic room. This was situated above the front hall under the eaves and looked out over the front garden. In the very early days this was a room used by the Benjamin family who lodged with the Powleslands for a time.



©Amaryllis Elphick 01/03/2014